

NEW

For Low ~ Middle current

Astonishing cost performance

FE-CB1245 FE-CB1240

【 Customer evaluation 】 《 Target work : Automotive undercarriage parts 》

Welding conditions

Current 210~260A Voltage 22~25V Gas CO2 Wire ST-12 (Copper plating wire)

Conventional tip CuCrZr 500 works/tip 11.1 hours/tip Welding speed 60 cm/min

Welding length 399.6 m/tip (Replaced with $\Phi 1.36$ for quality control)

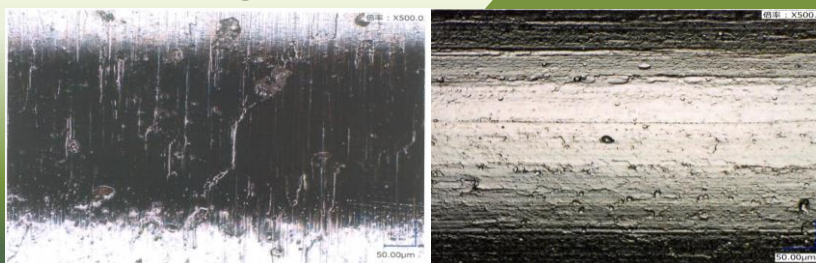
FE-CB1245 Welding length 3,516 ~ 4,395 m/tip max 122 hours/tip

Conventional ratio 8.8 ~ 11.0 times ↗

※ Since the tip life changes depending on the welding conditions, it is necessary to check in each condition.
(Applicable to copper plating wire)



- ☆ Amazing tip life of precision plating skill
- ・Stabilization of power supply by uniform film thickness
- ☆ Hole diameter Inner surface roughness mirrored (x500 times)



Wire feeding direction ← Greatly affects the initial abrasion gradient

【Left photo : conventional product】

【Right photo : Improved product】



SHINKOKIKI CO., LTD.

Postal code 452-0822

4-11, Nakaotai, Nishi-ku, Nagoya City, Aichi

TEL:+81-52-504-5150 FAX:+81-52-504-5158

Contact person Mr. Akao

TEL +81-52-408-5565 FAX +81-52-401-3612

Automotive parts customer evaluation example

Best selection for low ~ middle current

FE-CB1245 FE-CB1240

【 Customer evaluation 】 《 Target work : Automotive parts 》



Welding conditions

Current 200A Voltage 21V Gas CO2 Wire Lincoln (Copper plating)

Conventional tip CuCr 1245 4 hours/tip Welding speed 60 cm/min

Lending length 357 m/tip 1,140 mm/work

FE-CB1245 Welding length 2,856 m/tip 32 hours/tip Conventional ratio

【 Customer evaluation 】 《 Target work : Automotive parts 》

Welding conditions

Current 190A Voltage 20V Gas CO2 Wire SJ-50 (Copper plating)

Conventional tip CuCrZr 3 hours/tip Welding speed 40 cm/min

Welding length 61.5 m/tip 225 mm/work

FE-CB1245 Welding length 554 m/tip 18 hours/tip Conventional ratio 6.0 times ↗

Aiming for environmental friendliness (Eco ⇨ CO2 emission reduction) and 100% productivity!!

※ Since the tip life changes depending on the welding conditions, it is necessary to check in each condition.